

# ArcSport

-Arena wall which is 2m high recommended width is 9 meter.  
-If make wider than 9 meter long (2 meter high wall), must end support behind the wall. Use support curve. Between distance two support curve is max 3 meter

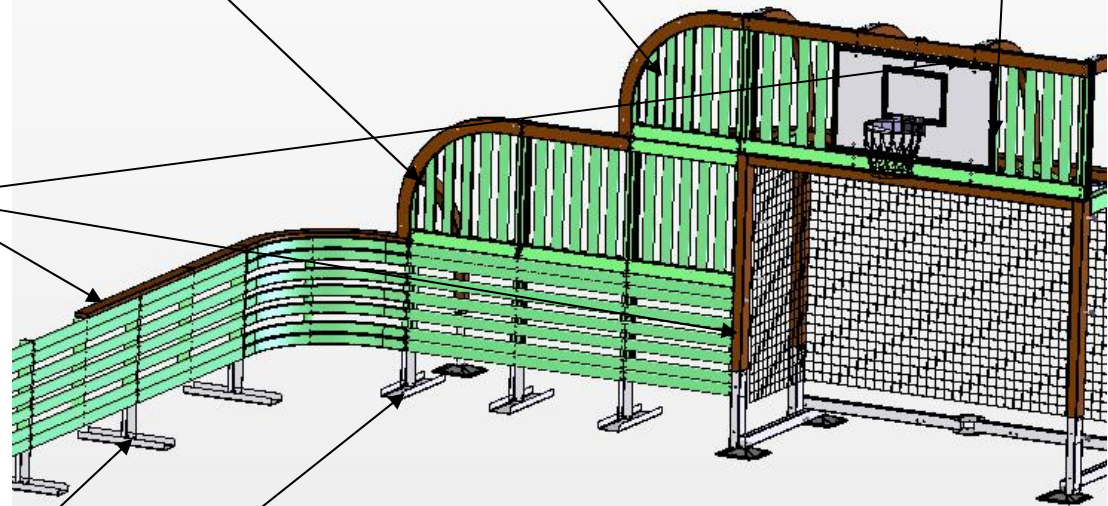
-Arena end wall which is 3 meter high can be maxim 5 meter long (like standard products)  
-Minimum width of field is 9 meter if want to use 3 meter high Arena end.

Football goal frame is always standard.  
Goal top part can take off if don't need basketball rack.

Standard ArcSport Arena is impregnated,  
Only goal frame, hand rail, arc and end walls top edge is painted brown

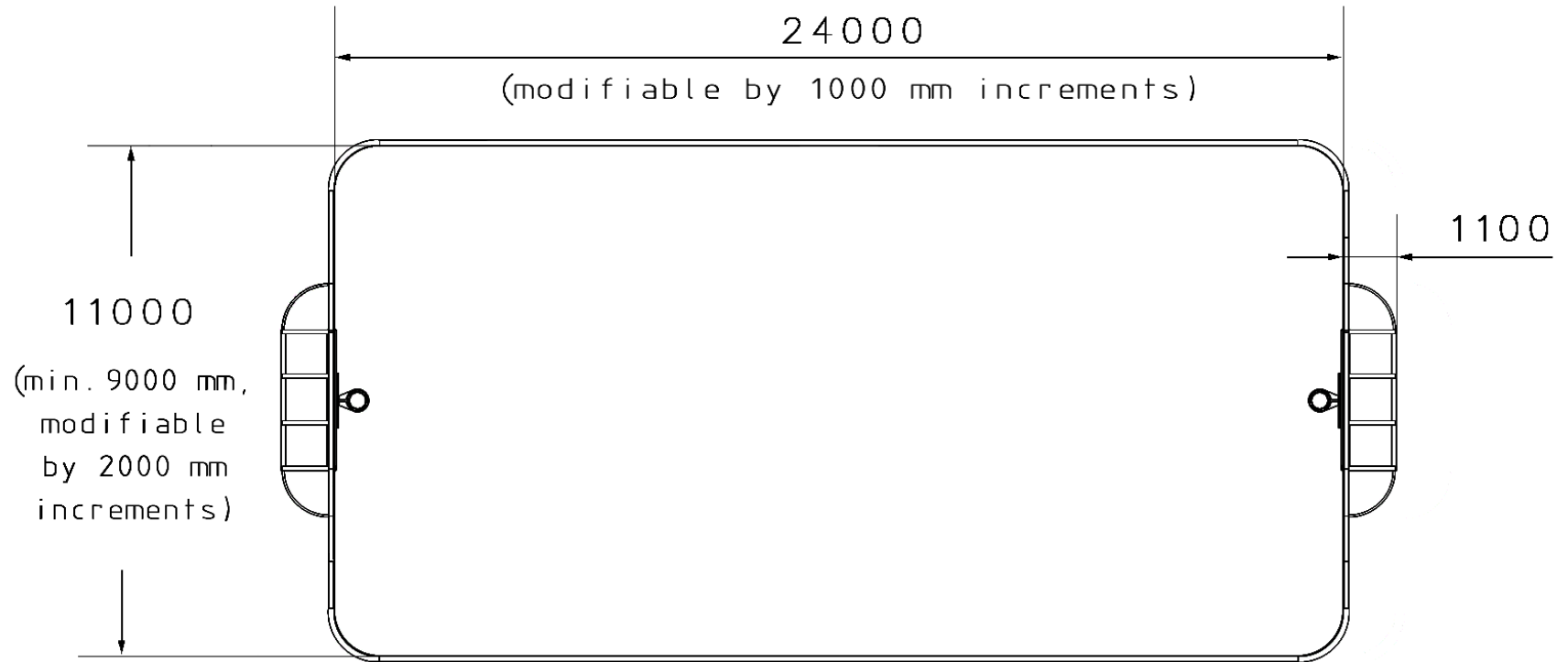
Side wall foundation distance is 2 meter.

End wall (over 1 meter high) foundation distance is 1 meter.



# ArcSport

---

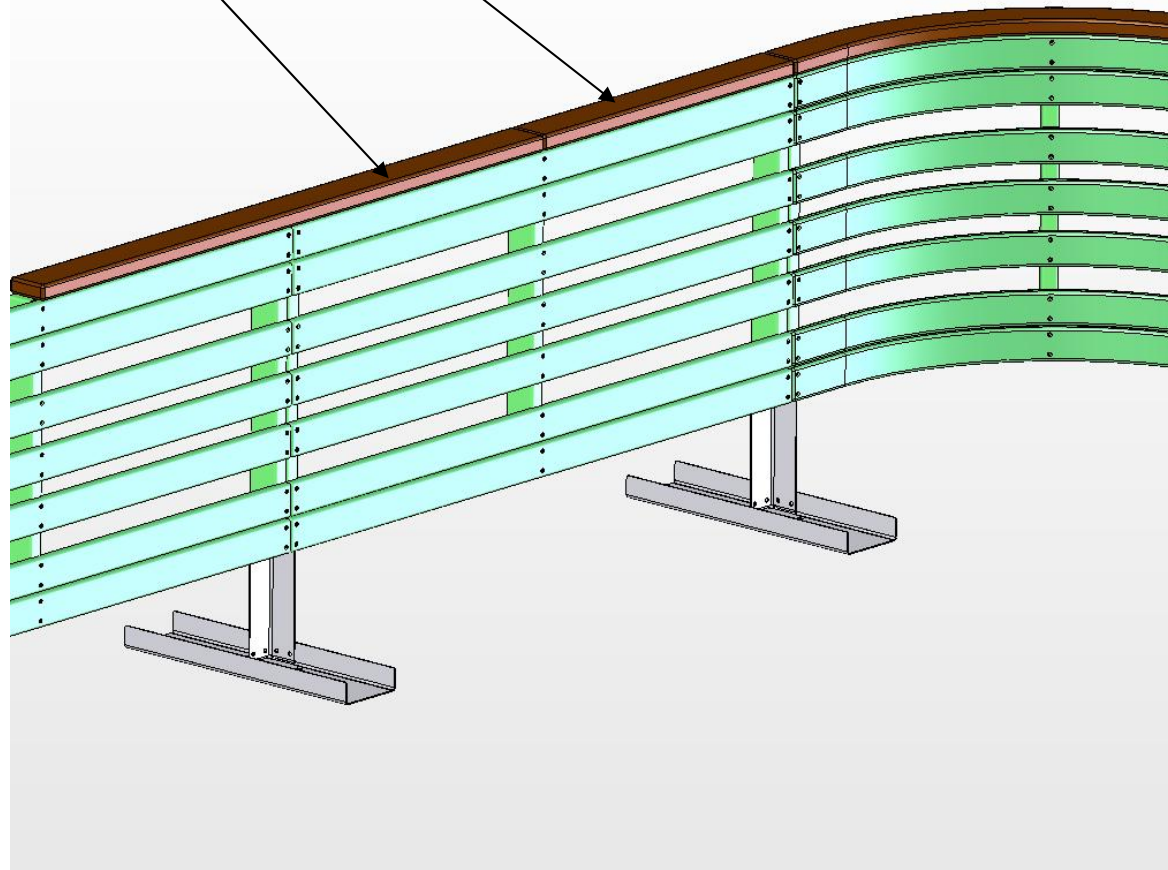


# ArcSport

---

Start after arc 1 meter long hand rail (702228).

Always start 2 meter long hand rail (702227)  
middle of 2 meter long wall element.



# ArcSport

---

## Modification examples

