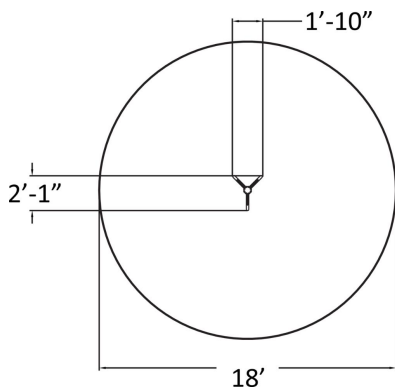


Goblin's Climbing (ASTM)



The US175550 product complies with the ASTM Standard. Climbing tree is almost 10 ft high play equipment with six branches. Climbing develops the climbers' fitness and motor skills. Besides climbing, the fun appearance of this climbing tree offers countless opportunities for play. All foundations are made of metal, sheltering the wood from direct contact with the ground to prevent rot and extend the products life.



Number of users	1
Product length, mm	560
Product width, mm	660
Product height, mm	2700
Height required, mm	2900
Max. free fall height, mm	1200
Safety info	ASTM F1487-17
Installation time (for 1), H	1