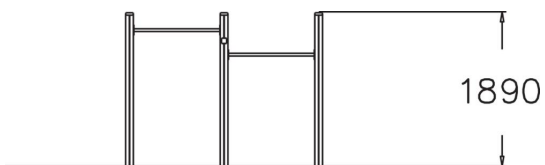
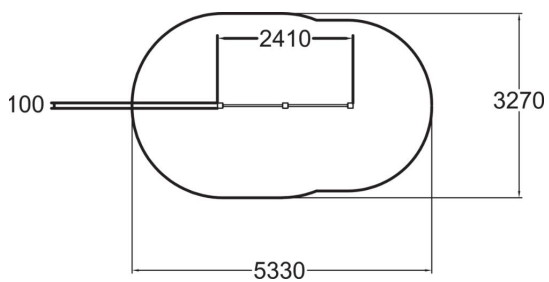
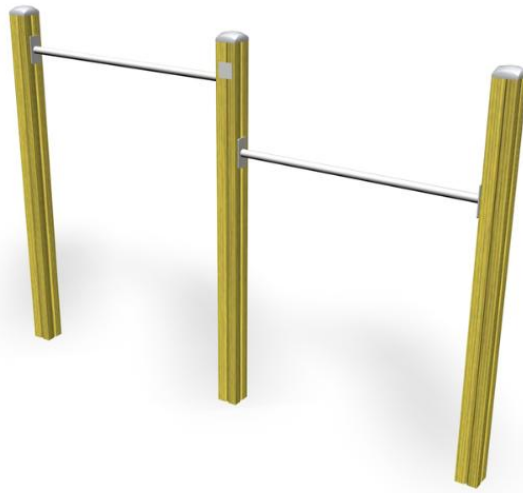



# CHINNING BARS FOR 2



Number of users	2
Product length, mm	2410
Product width, mm	95
Product height, mm	1890
Impact area, m <sup>2</sup>	14.8
Falling space, m <sup>2</sup>	14.8
Height required, mm	1980
Max. free fall height, mm	1680
Safety info	EN 16630, EN 1176-1 TÜV
Installation time (for 1), H	1
Wood	
Metal colour	