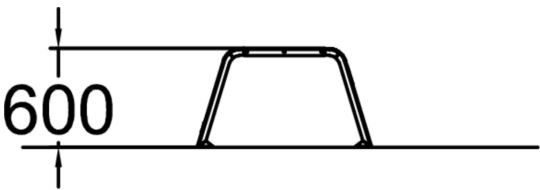
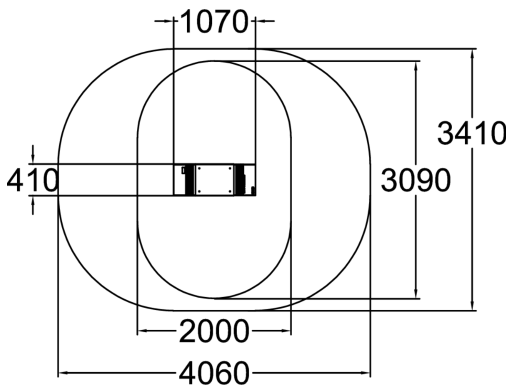


Sisu Box L



The Sisu Box L is a durable and compact outdoor training tool designed for functional fitness and bodyweight workouts. With a height of 600 mm, it supports various exercises, including jumps, strength training, and core stability. Built with carbon steel and finished with black structural paint, it withstands harsh outdoor conditions. The anodized aluminum surface ensures excellent grip and UV resistance, providing a safe and maintenance-free experience. Ideal for public parks, schools, and outdoor fitness areas, the Sisu Box is an essential addition for all training levels.



Number of users	1
Product length, mm	1065
Product width, mm	410
Product height, mm	600
Height required, mm	3100
Safety info	EN 16630 TÜV
Installation time (for 1), H	1
Foundation options	surface_mounting deep_mounting
Metal	