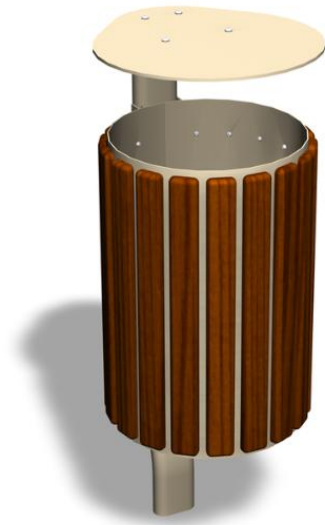
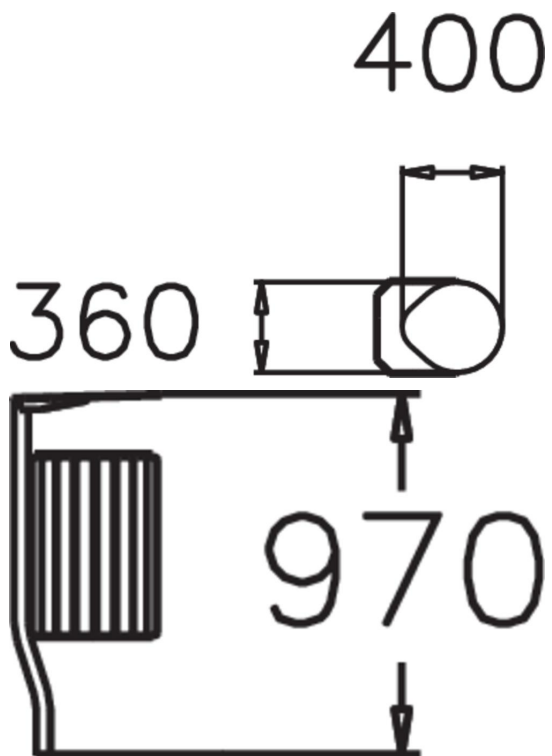



PARK LITTER BIN



Litter bin for parks and street environments. Park is a litter bin with wooden panelling and a raised lid. The bin holds 40 litres and is designed for poured foundations. The same Lappset Park range has seating and planting boxes which have the same design as the litter bin.



Number of users	0
Product width, mm	360
Product height, mm	973
Installation time (for 1), H	0
Foundation options	deep_mounting
Wood	
Metal	